

JEFF BERLIN : DIXIE

Handwritten musical notation for the first system of 'Dixie' by Jeff Berlin. The system consists of two staves, Treble and Bass, in the key of D major (indicated by two sharps). The time signature is 4/4. The Treble staff begins with a treble clef and a key signature of two sharps. The Bass staff begins with a bass clef and a key signature of two sharps. The notation includes various note values, rests, and a repeat sign at the end of the system.

Handwritten musical notation for the second system of 'Dixie' by Jeff Berlin. The system consists of two staves, Treble and Bass, in the key of D major. The time signature is 4/4. The Treble staff begins with a treble clef and a key signature of two sharps. The Bass staff begins with a bass clef and a key signature of two sharps. The notation includes various note values, rests, and a repeat sign at the end of the system.

Handwritten musical notation for the third system of 'Dixie' by Jeff Berlin. The system consists of two staves, Treble and Bass, in the key of D major. The time signature is 4/4. The Treble staff begins with a treble clef and a key signature of two sharps. The Bass staff begins with a bass clef and a key signature of two sharps. The notation includes various note values, rests, and a repeat sign at the end of the system.

Handwritten musical notation for the fourth system of 'Dixie' by Jeff Berlin. The system consists of two staves, Treble and Bass, in the key of D major. The time signature is 4/4. The Treble staff begins with a treble clef and a key signature of two sharps. The Bass staff begins with a bass clef and a key signature of two sharps. The notation includes various note values, rests, and a repeat sign at the end of the system.

Handwritten musical notation for the fifth system of 'Dixie' by Jeff Berlin. The system consists of two staves, Treble and Bass, in the key of D major. The time signature is 4/4. The Treble staff begins with a treble clef and a key signature of two sharps. The Bass staff begins with a bass clef and a key signature of two sharps. The notation includes various note values, rests, and a repeat sign at the end of the system.

Handwritten musical notation for the sixth system of 'Dixie' by Jeff Berlin. The system consists of two staves, Treble and Bass, in the key of D major. The time signature is 4/4. The Treble staff begins with a treble clef and a key signature of two sharps. The Bass staff begins with a bass clef and a key signature of two sharps. The notation includes various note values, rests, and a repeat sign at the end of the system.

[illegible]

A handwritten musical score for the song "The Rose Tree". The score is written on two staves, Treble and Bass clef, in 4/4 time. The key signature is one sharp (F#). The melody is written in the Treble clef, and the bass line is written in the Bass clef. The score consists of three measures, followed by a double bar line and the number 6, indicating the end of the piece. The notation includes various musical symbols such as notes, rests, and bar lines.

A handwritten musical score for the song "The Rose Tree". The score is written on two staves, Treble and Bass, with a grand staff bracket. The key signature is three sharps (F#, C#, G#) and the time signature is 6/4. The melody is written in the Treble staff, and the bass line is in the Bass staff. The music is divided into two systems by a double bar line. The first system contains the first two measures, and the second system contains the next two measures. The notation includes various musical symbols such as notes, rests, and bar lines.

A handwritten musical score for the song "The Rose Tree". The score is written on two staves, Treble and Bass, in G major (one sharp). The key signature is G major, indicated by a single sharp (F#) on the top line of the Treble staff. The time signature is 4/4, indicated by a '4' over a '4' at the beginning of the first staff. The melody is written in the Treble staff, and the bass line is written in the Bass staff. The piece consists of two measures. The first measure contains a melody starting on G4, moving up to A4, B4, and C5, then down to B4, A4, and G4. The bass line starts on G2, moving up to A2, B2, and C3, then down to B2, A2, and G2. The second measure contains a melody starting on G4, moving up to A4, B4, and C5, then down to B4, A4, and G4. The bass line starts on G2, moving up to A2, B2, and C3, then down to B2, A2, and G2. The piece ends with a double bar line. The score is written in ink on a piece of paper with a faint grid pattern.

A handwritten musical score for the song "The Rose Tree". The score is written on two staves, Treble and Bass clef, with a key signature of three sharps (F#, C#, G#) and a 4/4 time signature. The melody is written in the Treble clef, and the bass line is written in the Bass clef. The music is in common time (4/4). The melody consists of a series of eighth and quarter notes, with a final measure containing a half note and a quarter note. The bass line consists of a series of eighth and quarter notes, with a final measure containing a half note and a quarter note. The score is written in ink on a piece of paper with a light blue grid background.

A handwritten musical score for the song "The Rose Tree". The score is written on two staves, Treble and Bass clef, in G major (one sharp) and 4/4 time. The melody is in the Treble clef, and the bass line is in the Bass clef. The piece consists of 8 measures. The first four measures are the main melody, and the last four measures are a variation or ending. The notation includes various note values (quarter, eighth, and sixteenth notes), rests, and a key signature of one sharp (F#).



First system of handwritten musical notation. The treble clef staff begins with a key signature of three sharps (F#, C#, G#) and a 6/8 time signature. The bass clef staff also begins with a key signature of three sharps and a 6/8 time signature. The notation includes various note values, rests, and a repeat sign.

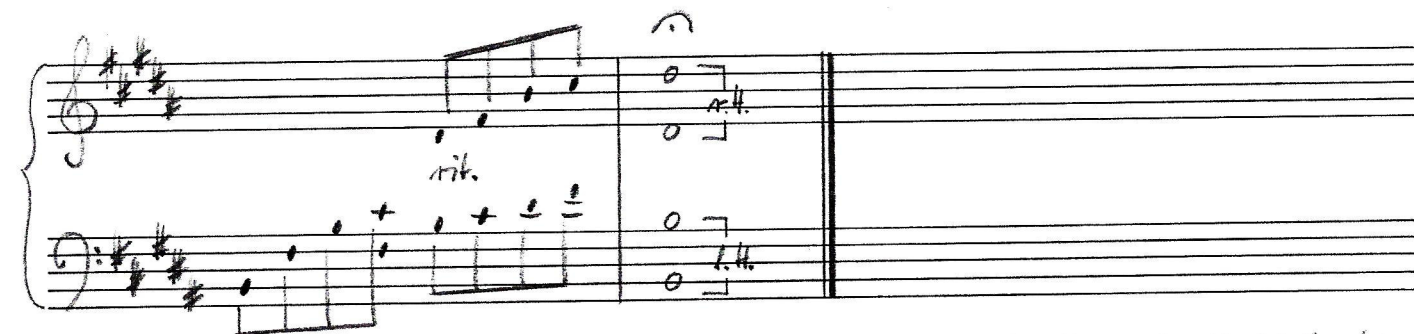
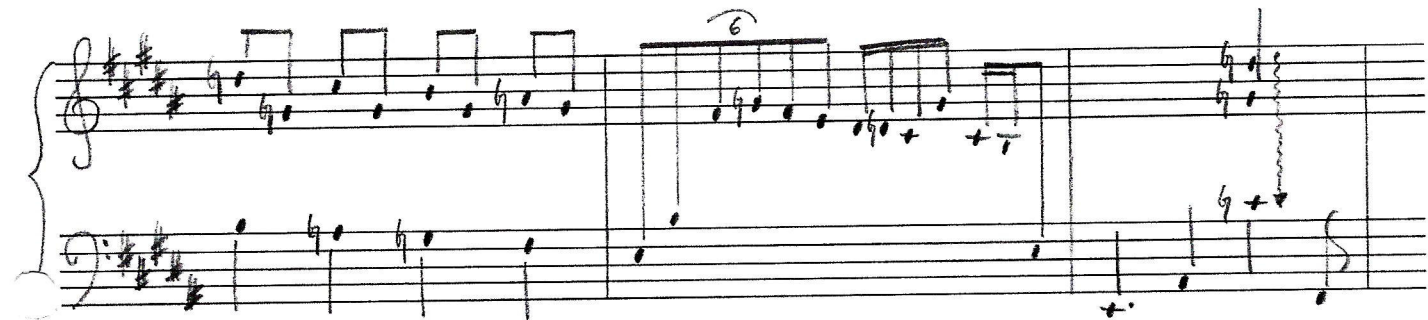
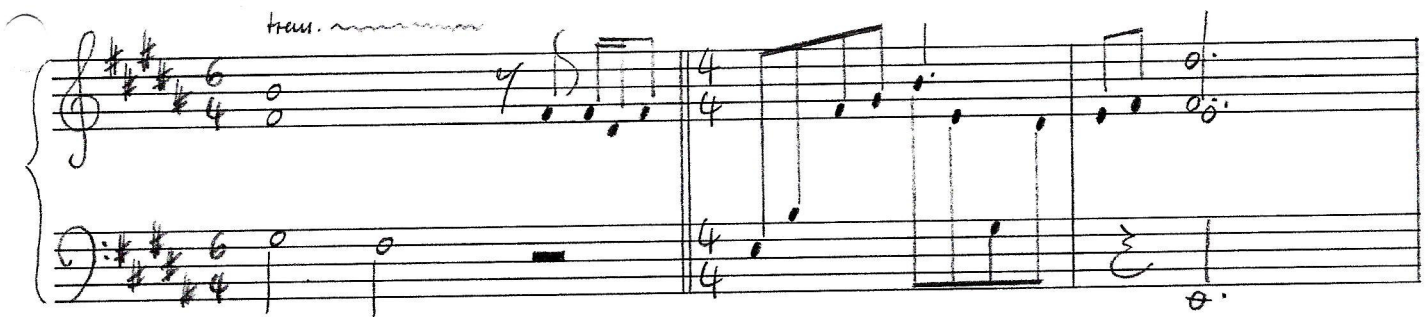
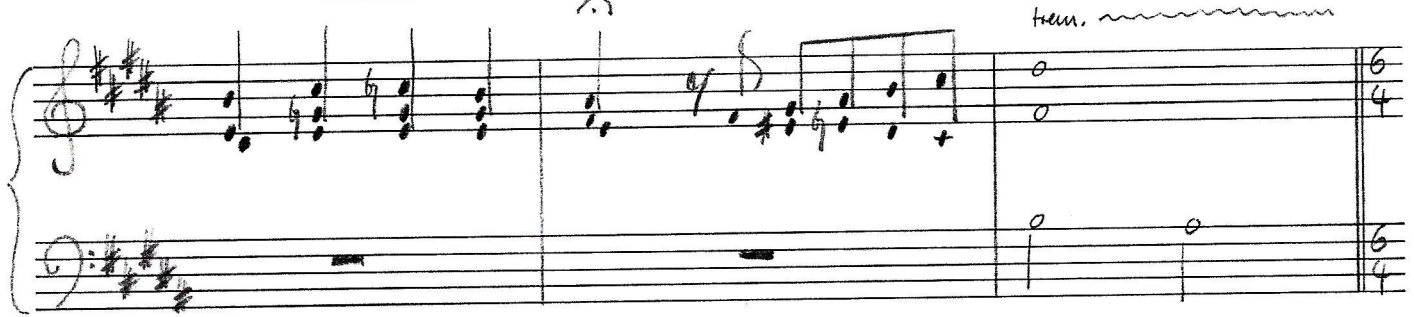
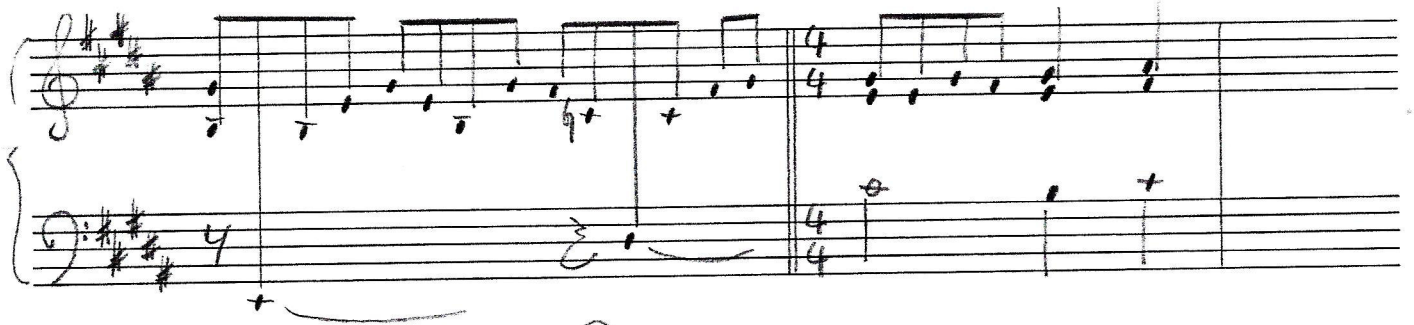
Second system of handwritten musical notation. The treble clef staff continues the melody with a 5/4 time signature change. The bass clef staff includes a 'r. h.' (right hand) marking and a 4/4 time signature change.

Third system of handwritten musical notation. The treble clef staff features a 7/4 time signature change. The bass clef staff includes a '6' marking under a group of notes, indicating a sixteenth-note pattern.

Fourth system of handwritten musical notation. The treble clef staff includes a 'r. h.' marking and a 'slide' annotation. The bass clef staff includes a 'l. h.' (left hand) marking and a '5' marking over a group of notes.

Fifth system of handwritten musical notation. The treble clef staff includes a '6/4' time signature change. The bass clef staff includes a '6/4' time signature change and a '6' marking under a group of notes.

Sixth system of handwritten musical notation. The treble clef staff includes a '7/4' time signature change. The bass clef staff includes a '7/4' time signature change and a '6' marking under a group of notes.



Transkription: Berthold Basten