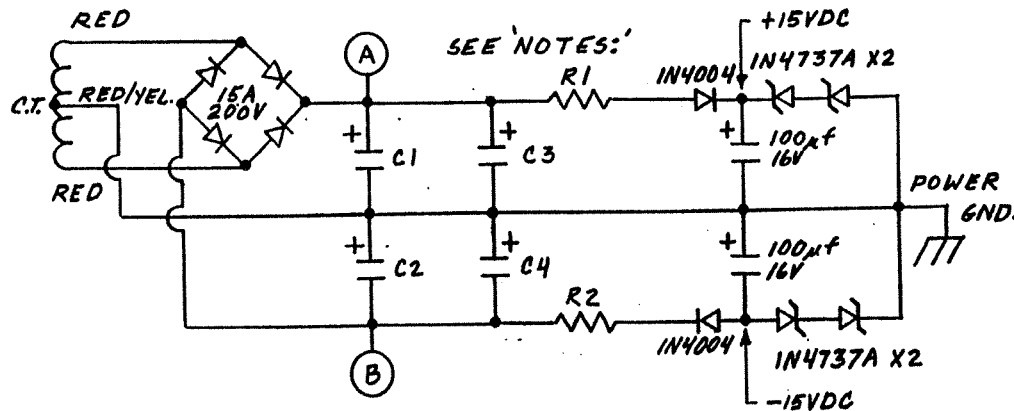
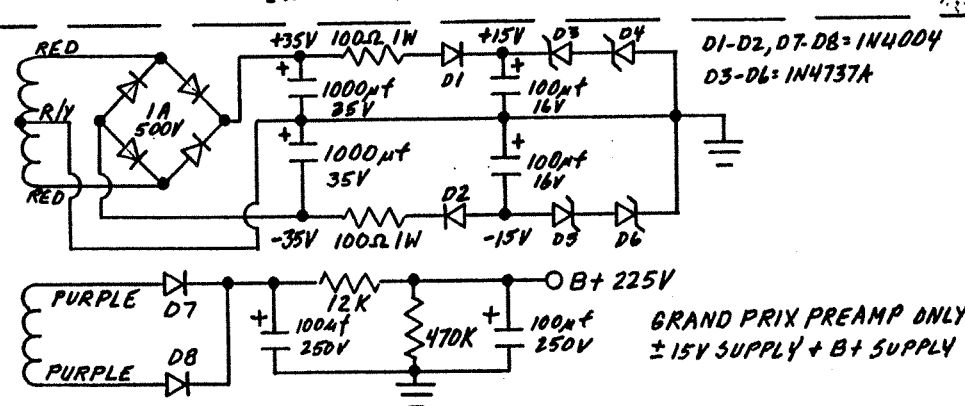
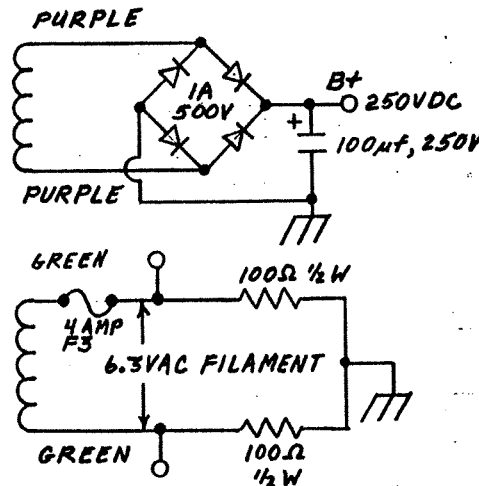


NOTE: NOT ON SM-400 OR G.T.P.



POWER SUPPLY CIRCUIT  
TRANSFORMER SECONDARY WIRING  
REF.:  
STUDIO 220 PCB#170001  
SM-400 PCB#170003, 170004  
BABY/ELECTRIC BLUE PCB#170008  
STEREO 800/SM-900 #170011  
BASSIC BLACK PCB#170013



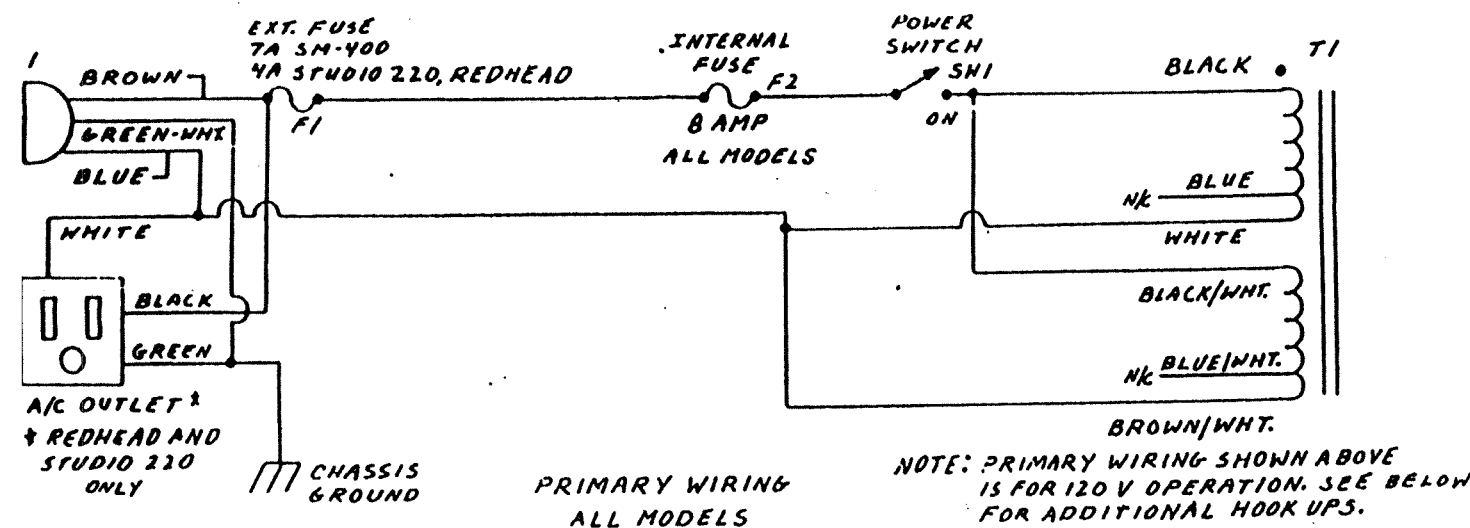
- NOTES:
- POINT 'A' = +DCV, POINT 'B' = -DCV  
- G.T. PREAMP = ±35V  
- STUDIO 220, SM-400, REDHEAD, BABY/ELECTRIC BLUE = ±60V  
- STEREO 800, SM-900 = ±75V
  - C1 THRU C4 VALUES  
- G.T. PREAMP C1, C2 = 1000µF, 35V  
- STUDIO 220, BABY/ELECTRIC BLUE C1, C2 = 4700µF, 63V C3, C4 = N/A  
- SM-400, REDHEAD C1-C4 = 4700µF, 63V  
- STEREO 800, SM-900 C1-C4 = 6800µF, 80V  
- BASSIC BLACK C1, C2 = 4700µF 63V
  - R1 AND R2 VALUES  
- G.T. PREAMP = 100Ω, 1W  
- STUDIO 220, SM-400 = 660Ω, 3W  
- REDHEAD, BABY/ELECTRIC BLUE, BASSIC BLACK = 820Ω, 3W  
- STEREO 800 = 1.1K, 5W  
- SM-900 = 550Ω, 10W

SWR ENGINEERING, INC.  
12823 Foothill Blvd. Unit F  
SYLMAR, CALIFORNIA 91342

### SCHEMATIC

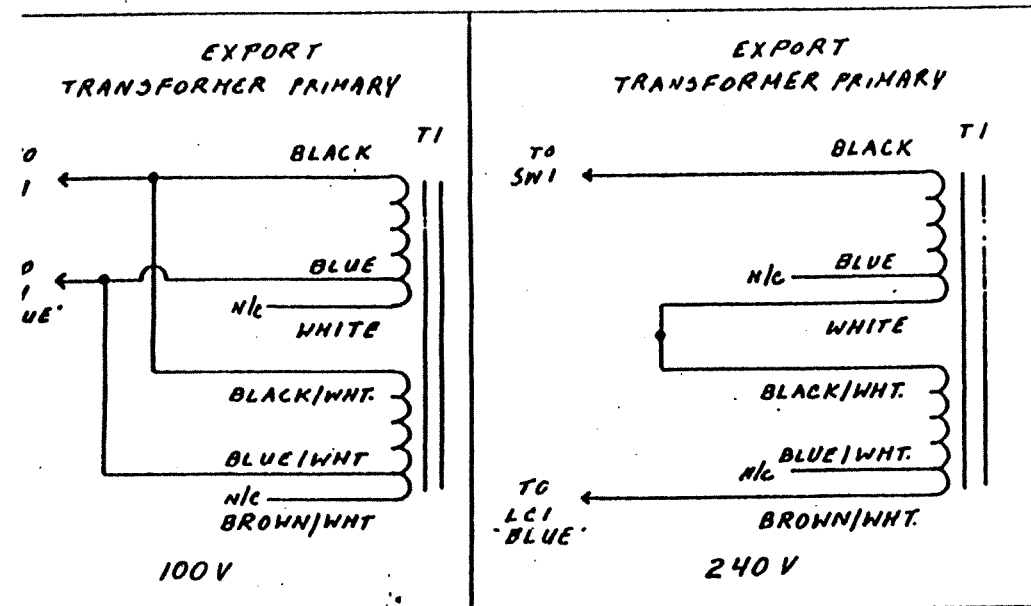
- SECONDARY WIRING
- PREAMP/POWER CLIP CIRC.
- ALL MODELS

REV. C NO. 1002  
DRAWN: S.W. RABE FEB. 6, 1971



# NOTES:

1. 'N/C' = NO CONNECTION
2. 'WHT' = WHITE
3. F1 FUSES ARE 3AG, 3LO-BLO
4. F2 FUSES ARE 3AG, FAST BLO, PIGTAIL.
5. ALL PRIMARY WIRE UL TYPE 1015 OR 1007, 18 GA.
6. PIN FOR STUDIO 220 TRANSFORMER = 560001A. 3M-400/REDHEAD = PIN 560003A. BABY/ELECTRIC BLUE = 560005 GRAND PRIX PREAMP = 560006

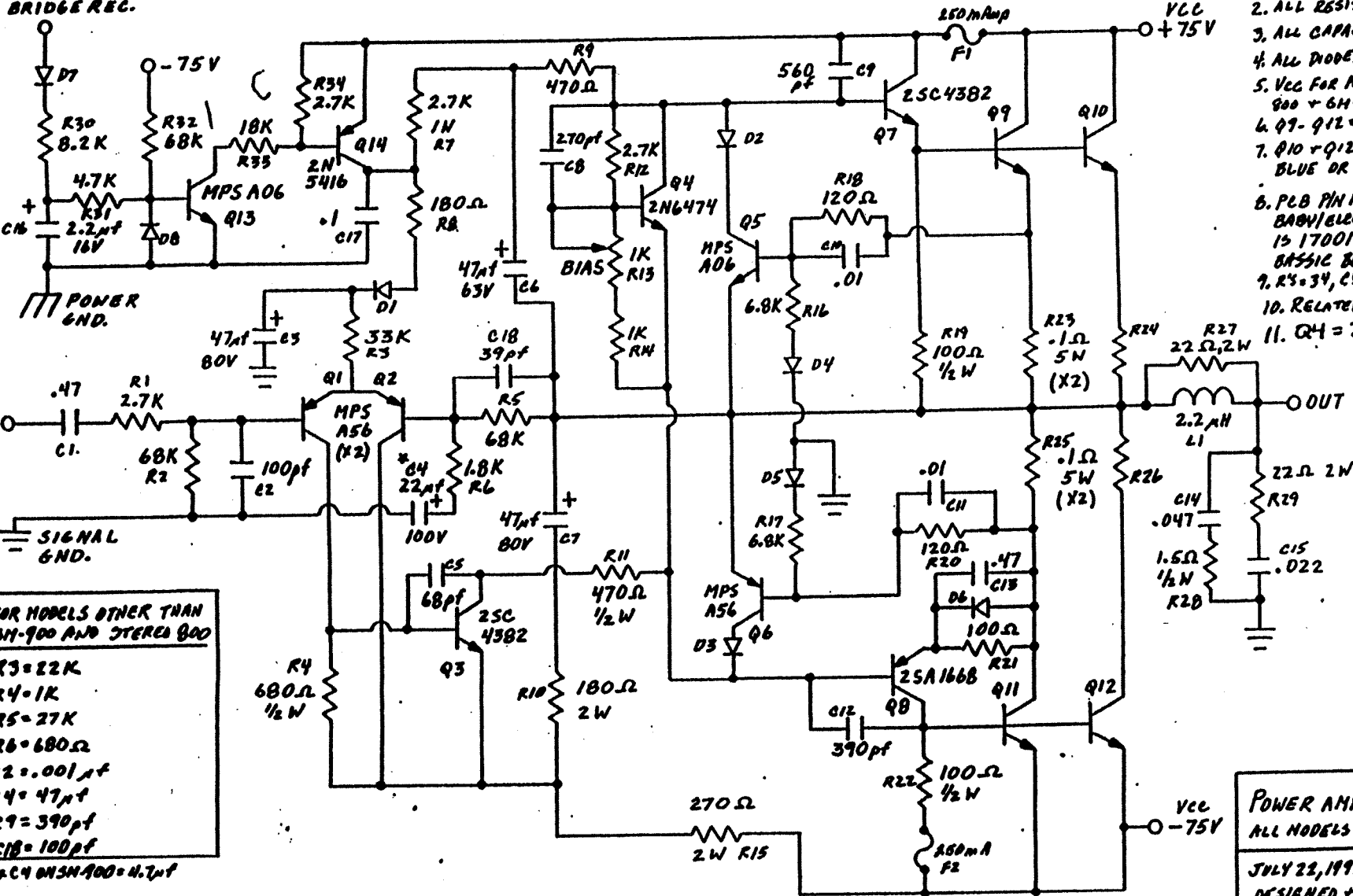


SWR ENGINEERING, INC.  
12823 Foothill Blvd., Unit F  
SYLMAR, CA 91342

SCHEMATIC  
PRIMARY WIRING  
DOMESTIC + EXPORT  
ALL MODELS

FEB. 22, 1990 DHM S.N.R.  
NO. 1001 REV. C

A/C TERMINAL  
BRIDGE REC.



NOTES: UNLESS OTHERWISE  
SPECIFIED.

1. SEE TABLE FOR ALTERNATE R+C  
VALUES FOR OTHER MODELS. VALUES  
SHOWN ARE FOR STEREO 800, SM-900.

2. ALL RESISTORS IN OHMS, 4W, 5%.

3. ALL CAPACITORS IN MICRO-FARAD.

4. ALL DIODES IN 4004.

5. VCC FOR MODELS OTHER THAN STEREO

800 + 6H-900 = 5 60VDC

6. Q9-Q12 = 2SC3264 (BANKEN ONLY)

7. Q10+Q12 NOT ON BABY/ELECTRIC  
BLUE OR BASSIC BLACK

8. PCB PIN FOR ALL MODELS EXCEPT  
BABY/ELECTRIC BLUE + BASSIC BLACK

IS 170010. BABY BLUE-170008.

BASSIC BLACK-170013.

9. R3=34, C3=18, D3=8, Q4=14, L1=1, F1=2

10. RELATED DIALS 1002, 1003

11. Q4 = 2SC3834 after

1/25/98

POWER AMP SCHEMATIC 1011  
ALL MODELS BUILT AFTER JUNE, 1992

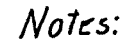
JULY 22, 1992

DESIGNED + OWN. BY: S.H. RADE

SWR ENG., INC.

80824-3355

**A/C TERMINAL  
BRIDGE REC.**



1. D.C. VOLTAGES FOR REDHEAD ARE 10% HIGHER.
2. ALL RESISTORS  $\frac{1}{4}$  WATT UNLESS NOTED.
3. ALL CAPALITORS IN MICRO-FARAD UNLESS NOTED.
4. ALL DIODES ARE IN4004.
5. Q9 THRU Q12 MAY BE 2SD555. USE ONLY NEC OR TOSHIBA.
6. BABY/ELECTRIC BLUE ONLY:
  - A. Q9, Q11 = 2SC3264
  - B. Q10, Q12 NOT ON THESE MODELS
  - C. PCB# 170008
7. FOR STEREO 800 + 54-900 SEE DWG. 1011.



**DATA ENGINEERING**

12734 Irwinford St., Unit 7 • Picoine, CA 95301

**POWER AMP SCHEMATIC**  
ALL MODELS PRIOR TO JULY, 1992

JUNE 6, 1984 REV.C 2-5-91.

DESIGNED + DRAWN - S.W. RABE  
PLA # 170002 A NO. 1003